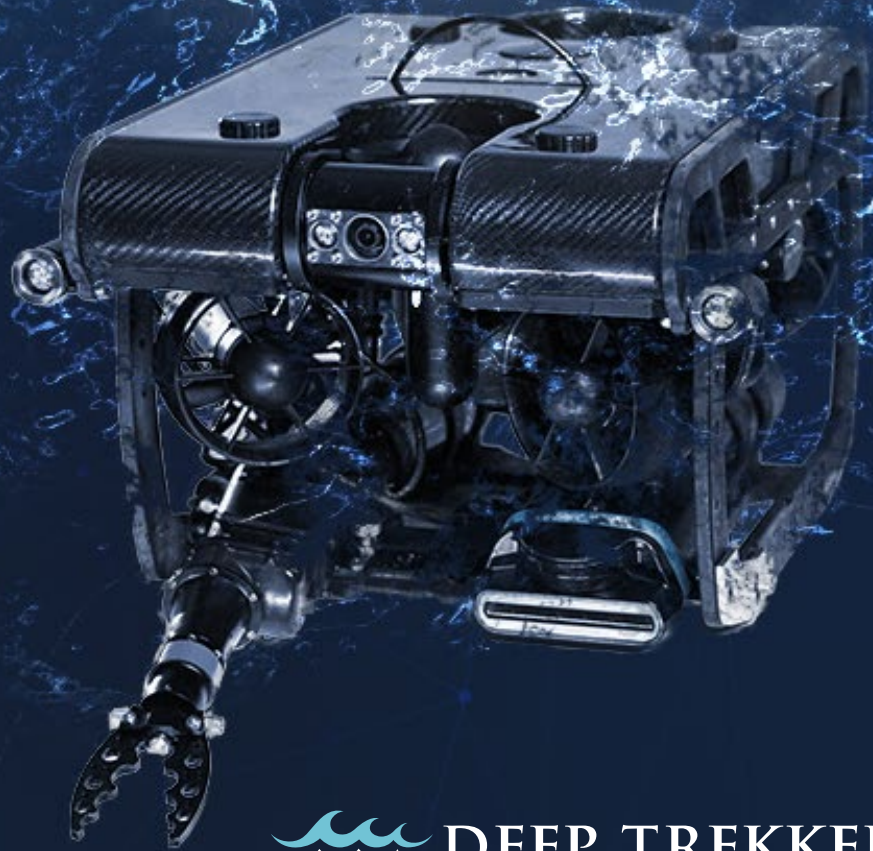


PIVOT **REMOTELY OPERATED** **VEHICLE [ROV]**

The perfect balance between size and power.
Providing enhanced stability, greater power,
speed and control in a portable package.

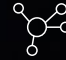



 **DEEP TREKKER™**


PORTABILITY MEETS POWER

The Deep Trekker PIVOT, portability meets unmatched power. Equipped with 6 strong thrusters powered by lithium batteries, the PIVOT provides users with stability, power, speed and control in a portable package.

 305m (1000ft) depth rating

 Comprehensive sensor integrations

 HD rotating camera head

 Modular for 3rd party add-ons



Rotating tool platform

Independently revolve 97-degrees for manipulator, sonar and more.



Field swap batteries

Quick-change batteries in the field for extended missions.



Autonomous capabilities

Seamlessly fusing all sensor data for autonomous control.

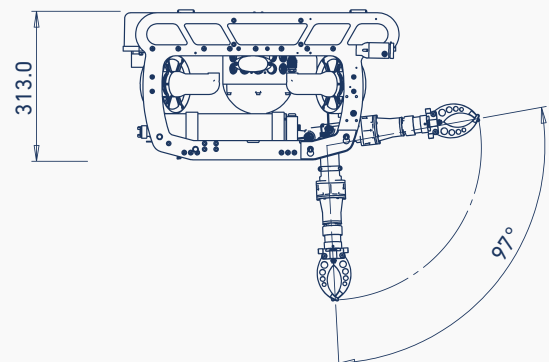
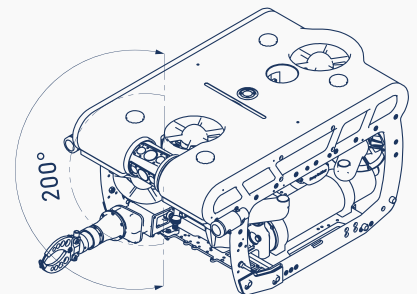
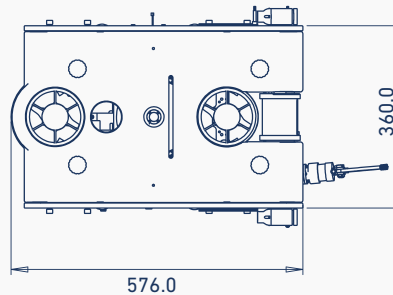
GENERAL SPECIFICATIONS

ROV General Specs

Width :	360 MM (14.2")
Height :	310 MM (12.2")
Length :	576 MM (22.7")
Weight (in air) :	16.8 KG (37 LB)
Body Material :	Anodized Machined Aluminum, Carbon Fiber, & Stainless Steel Buoyancy Foam
Window Material :	Sapphire & Acrylic
Depth Rating :	305 M (1000 FT)
Operating Temp :	-10°C to 50°C (14°F – 122°F)
Case:	Custom Pelican Air 1650 & 1560 Handle and Wheels
Drives/Thruster:	Magnetically Coupled/Sealed
Warranty :	1 Year – Parts and Labor (optional 2-3 yrs)

ROV Electrical System

System Voltage :	19.6 VDC
Thruster Control :	6x Independent Control Infinitely Variable 100% Reversible



COMBINING FLEXIBILITY, STABILITY AND INTELLIGENT FEATURES FOR UNMATCHED FREEDOM

97-degree rotating tool positioning provides pilots with flexible imaging options and convenient tool manipulation from a stable platform - allowing for jobs to be completed quickly and conveniently. The 200-degree range of motion on the HD camera allows users to complete inspections in a timely, straightforward manner.

- The expandable tool platform allows for numerous modular options for adaptability and customization.
- In addition to being flexible and adaptable, the PIVOT is easy to use allowing operators to be trained quickly.
- The ideal combination of stability and flexibility lets users keep their platform in the most stable position for imaging options.

OUT-OF-BOX READY

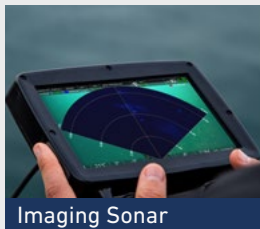
Fully assembled and tested, operators can depend on their PIVOT to work right out of the box no matter what the mission.

- Carbon fiber and aluminum durability make the PIVOT a tough and reliable vehicle. Providing years of service - saving time and money long term.
- Magnetically coupled thrusters, stainless steel components and sapphire lens cover paired with intelligent design ensures that operators can trust their vehicle to get the job done.
- With the support of the Deep Trekker team behind every vehicle, users can expect exceptional customer service.

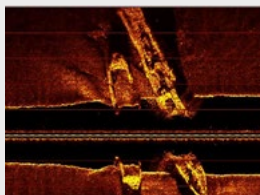
VEHICLE COMPONENTS & OPTIONAL ADD-ONS



Independent Pivoting Tool Skid



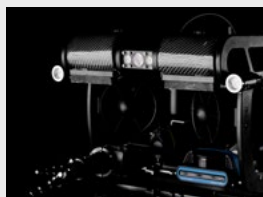
Imaging Sonar



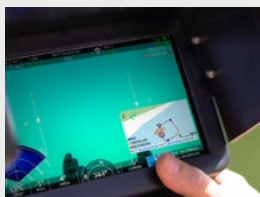
Side Scan Sonar



6-Thruster Stability



Future Autonomy



USBL Positioning



POWERED BY BRIDGE TECHNOLOGY

An intelligent, technology platform from Deep Trekker. An operating system designed with custom hardware and software; for control, integration, communication and enhanced operation.

Enable the ability to fuse all sensor data into one handheld, weatherproof controller. See positional data, direct imaging sonar feed and more - all alongside the ROV live video feed.



Simplified control



Seamless integrations



Constant communication



Enhanced operations

	PIVOT SMART	PIVOT EXPERT	PIVOT NAV
HD Rotating Camera Head	✓	✓	✓
7" LCD Controller	✓	✓	✓
300M Depth Rating	✓	✓	✓
Tether Length	100M	150M	300M
Tether Reel	✓	✓	✓
Tool Platform	-	✓	✓
Spare Batteries	-	✓	✓
Sensor Pack	✓	✓	✓
Carrying Cases	✓	✓	✓
Microphone	✓	✓	✓
Lighting	✓	✓	✓
Additional Lighting	-	✓	✓
Grabber	-	✓	✓
Fully Assembled and Test	✓	✓	✓
Warranty	One Year	One Year	Two Years
Online Training	-	✓	✓
USBL Positioning	-	-	✓
DVL	-	-	✓
Field Service Kit	-	-	✓
EXTRA ADD-ONS			
Imaging Sonar	NDT Tools	Custom Tether Lengths	
Mechanical Sonar	Grabbers and Manipulators	Service Kits	
USBL	Sediment Samplers	Operational Enhancements	
DVL	Water Samplers	Application Based Tools	
Side Scan	Additional Cameras		
Water Quality Sensors	Additional Lighting		

UNDERWATER REMOTELY OPERATED VEHICLES & ROBOTS

With over a decade of proven performance, Canadian company, Deep Trekker, is one of the largest underwater ROV manufacturers in the world – delivering high quality, robust and portable underwater robots to industries ranging from aquaculture to municipal contracting, military and defense, search and rescue, shipping, infrastructure and more.