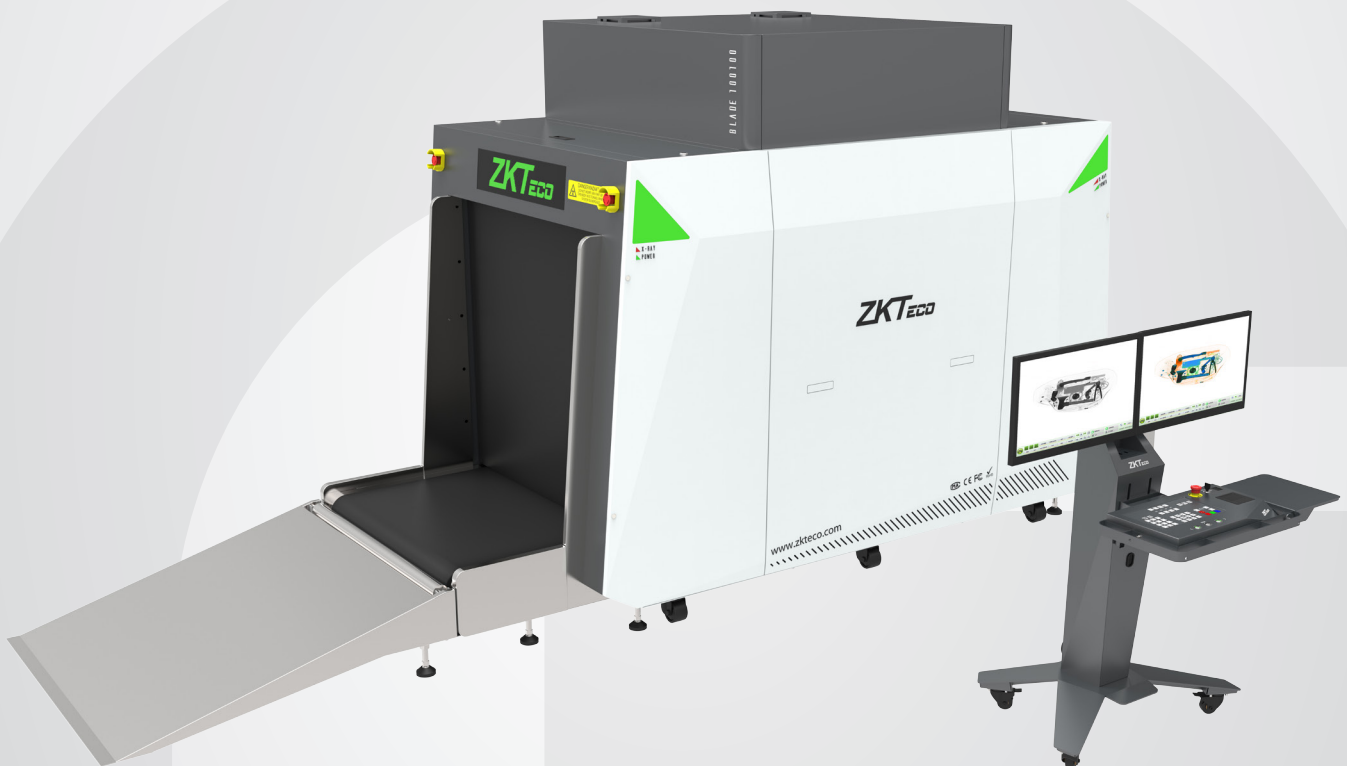


BLADE100100

X-ray Baggage Inspection System



BLADE100100 is an X-ray baggage inspection system with a tunnel size of 1010*1010(mm) which provides an effective inspection on big baggage and other items. It helps to identify suspicious items such as weapons, liquids, explosives, drugs, knives, fire guns, bombs, toxic substances, flammable substances, ammunition and other dangerous objects which may lead to potential safety hazard by atomic number identification.

High image quality in combination with automatic identification of suspicious objects allows the operator to quickly and effectively evaluate any luggage content.

Features

- Real-time detection to aid operators in identifying suspicious item
- Typical steel penetration up to 35mm
- Startup with fingerprint
- Uninterruptible Power Supply (UPS)
- Equipped with foldable rack
- Adjustable conveyor Speed
- Real-time Remote Monitoring System
- Luggage image and Walk Through Metal Detector status display on the same screen
- Threat Image Projection (TIP)
- Operator desk with two monitors

Options

- Video Surveillance
- Gray Paint
- Eyes on Function (eye tracking technology to follow the users' eyes as they are operating x-ray inspection. There will be a prompt when the operator's eyes are off the screen.)

Specifications (GL Exclusive Feature)

Technical Characteristics:

Tunnel Dimensions(W*H): 1010mm*1010mm

G Conveyor Speed: 0.20 m/sec ~ 0.40m/sec

Load on Conveyor:

Max 200 kg (evenly distributed)

Space Definition:

HorizontalΦ1.0mm VerticalΦ2.0mm

G Steel Penetration: 35mm (guaranteed);
38mm (typical)

G Wire Resolution: 38AWG (guaranteed);
40AWG (typical)

Dual-energy Detector: Yes

Number of Colors in X-ray Image: 3

Dimensions(L*W*H):

4282mm*1482mm*1917mm

Dimensions of Operator Desk (L*W*H):

797mm*789mm*1140mm

Package Dimensions (L*W*H):

2900mm*1500mm*2100mm

Weight: 1260kg + 70kg (Operator Desk)

Package Weight: 1530kg

Film Safety: ASA/ISO1600 standard of film safety

Single Inspection Dosage Rate: $\leq 1.0\mu\text{Gy}$

Operating Environment:

Operating Temperature: -10°C to +45°C

Storage Temperature: -20°C to +60°C

Humidity: 5-95%, non condensing

Power Supply: 230 VAC +/- 10% / 60/50 Hz (EU)
110 VAC +/- 10% / 60/50 Hz (US)

Power Consumption: Approx. 1.0kVA

Sound Pressure: <55.8dB (A)

X-ray Generator:

G Tube Current: 0.5-1.2 mA (adjustable)

G Anode Voltage: 150-170 kV (adjustable)

Generator Cool: Seal oil cooling / 100%

Computer Specification:

Processor: I7-7700

Monitor: 21" LED color

Memory: 8 GB DDR4

Hard Drive: 240GB SSD+1TB HDD

Graphic Card: NVIDIA GeForce GTX 1660 Ti

USB Port: 4 ports

Software Features:

Perfect View (PV)

Black / White (B/W)

Pseudo Colors (PS)

Inverse View (IN)

High Penetration (HP)

Real-time Image Processing

Image Zoom(64x)

Image of Previous Baggage

Programmable Function Keys

Baggage Counter

Date / Time Indicator

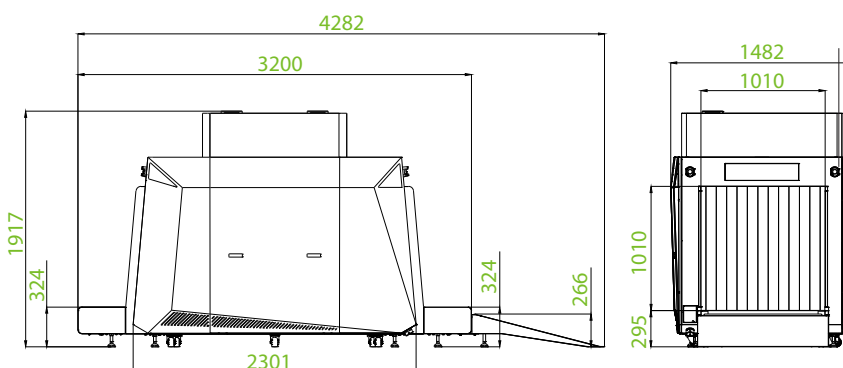
Threat Image Projection (TIP)

G Automatic Identification of Suspicious

G Cloud Remote Control

G Status Monitoring of Walk Through
Metal Detector

Dimensions (mm)



ZKTECO EUROPE
www.zkteco.eu
E-mail: sales@zkteco.eu



Copyright © 2019 ZKTECO CO., LTD. All rights reserved.
V1.1 2019.11.25