

SECURITY X-RAY SCREENING SYSTEMS

PEOPLE
SCREENING

PARCEL, BAGGAGE
AND SMALL CARGO
INSPECTION

CARGO
AND VEHICLE
INSPECTION



OUR MISSION:

«TO EXCEED CUSTOMER EXPECTATIONS
AND TO STAY AHEAD OF THE COMPETITION,
WITH A FOCUS OF DRIVING FORWARD FOR
SCIENTIFIC TRUTH»

LINEV Group is a privately owned group of companies that specializes in the supply of class-leading X-ray systems for the Security, Medical and NDT markets.

The group is a unique ecosystem made up of international companies, boasting over 30 years of experience within the X-ray technology industry, providing world class, quality products and solutions, supplied to all corners of the world.

A network of inter-connected companies, with the capabilities of sharing global expertise and skill sets, whilst working from a common platform. The innovative ecosystem allows for a unified focus towards our drive to scientific truth.

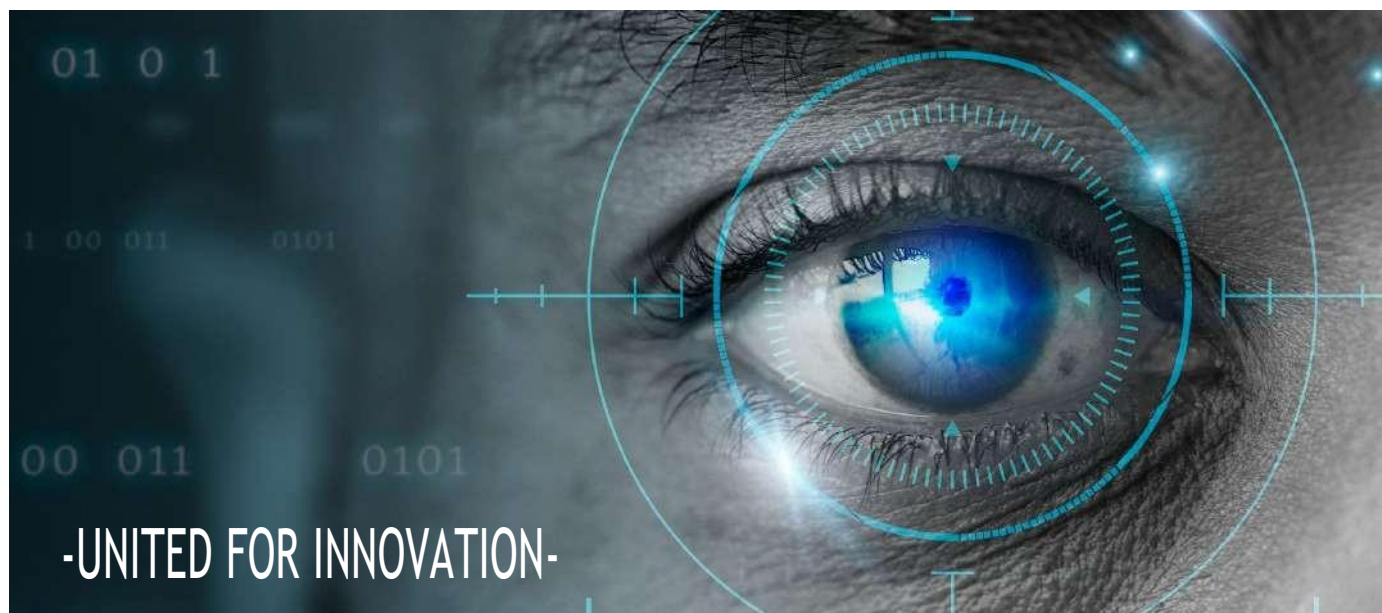
The unique approach of our employees is based on fast and flexible research & development, as well as working with a smart manufacturing systems process. This allows us to create the highest value for the market and exceed customer expectations.

Following the ambition to global expansion our companies have undergone a restructuring process transforming into a LINEV Systems global network represented by parent companies: LINEV Group Ltd and LINEV Group MENA. Giving us the global reach to better serve our markets.

This important phase solidifies our evolvement into a sustainable ecosystem enterprise, which will allow us to better serve our customers, and to meet global and diverse demands, based on current and anticipated future supply challenges, and ultimately carry the capacity to be instantly adaptive to innovative high-tech change in the modern world.

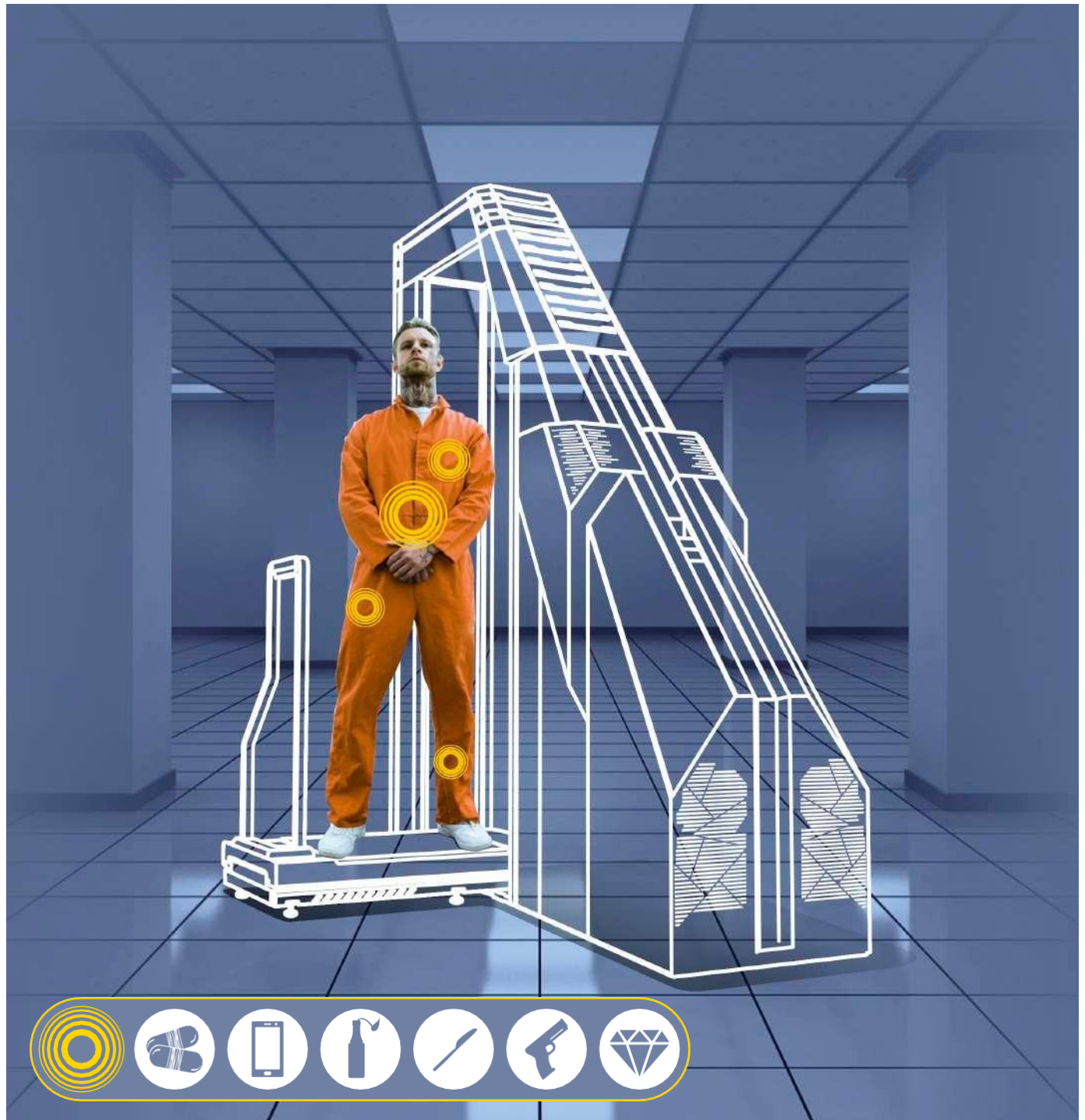
As a leader in checkpoint security, medical and NDT solutions, LINEV Systems will continue to establish industry standards and best practices for the use of our technologies while expanding on the success stories and results our products produce across the globe.

Customer focused approach combined with carefully designed innovations will remain our core value. We are now united for innovation under the LINEV Systems umbrella to better serve the world.





PEOPLE SCREENING



JAILS AND PRISONS



MILITARY FACILITIES



MINES



SECURITY CHECKPOINTS



CRITICAL INFRASTRUCTURE



VIP RESIDENCES



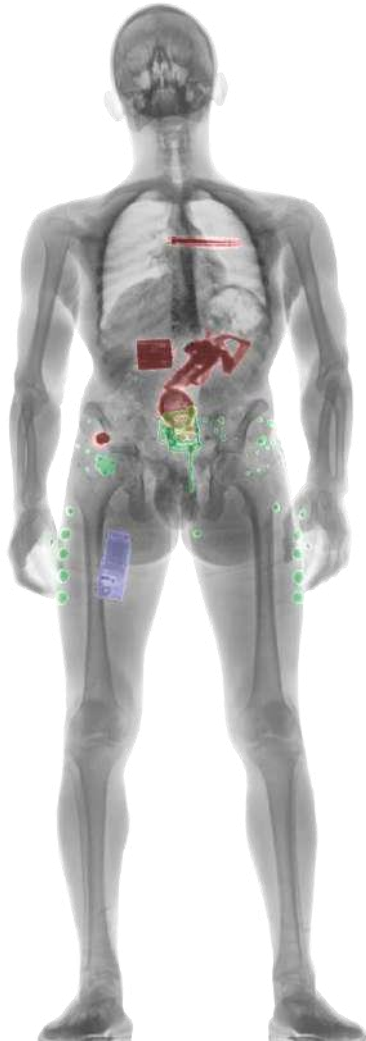
BORDER CROSSINGS



AIRPORTS



PUBLIC EVENTS AND VENUES



Considering that walk-through metal detectors cannot cope with all the latest security threats, the innovative personal security systems invented by LINEV Group are the best and the most effective solution for safety protection. Today when terrorists use more and more sophisticated techniques and means, such as non-metallic weapons, plastic and liquid explosives, and when drug dealers use human bodies as containers for drug transportation, the security systems must be enhanced by the latest technologies and solutions.

- Innovative imaging technology for personal inspection using an extremely low dose of X-ray transmission (comparable to 2 minutes flight in an airplane).

- Identification of a wide range of dangerous items that can be hidden in body cavities or concealed under clothing.

- High speed scanning improving and simplifying the checkpoint inspection process with no harmful effect on health.



CLEARPASS

Revolutionary high throughput body scanner

- Class leading Image quality
- A-EYE & DruGuard detection software
- Minimum safe operating area
- Wheelchair friendly and ADA compliant



CLEARPASS C.I.

Partial body scanner

CLEARPASS C.I. is the world's most advanced, mobile, single module body scanner, specially designed for the detection of contraband "on" or "in" the human body, by allowing selective area focused screening, which reduces screening and overexposure to other parts of the body.



Easily relocated



CLEARPASS COMPACT

Small footprint body scanner

The perfect fit for smaller rooms, this solution fit for smaller rooms this solution has all benefits from the original system including image quality and AI software.

NEW ERA-NEW DESIGN



SENTINUS

Instant X-ray checkpoint solution

Automated image view assistance
Remote system health monitoring
Automated operation control



CONPASS SMART DV

Dual View body scanner

- Best image quality on the market
- Easy relocatable modular design
- Single or Dual View solutions for the best threat detection
- All unique software features inside

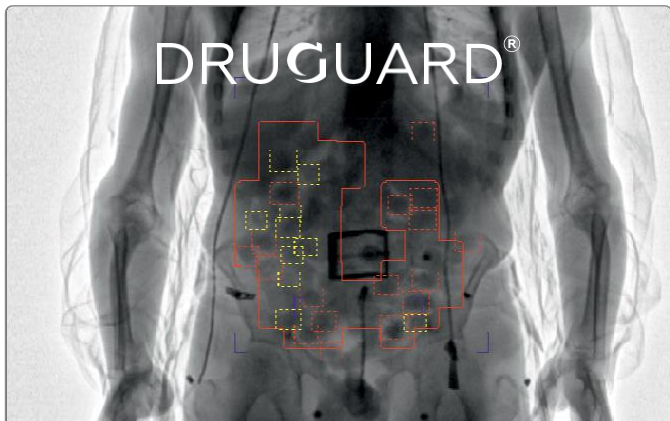
 **MADE IN BRITAIN**



CONPASS SMART TR

Focused View body scanner

Advanced security solution with enhanced detection capabilities for fast, safe and precise screening for items on or in the body within the central area – the most important screening zone for swallowed threats.



AUTOMATED NARCOTICS DETECTION SOFTWARE DRUGGUARD

DRUGGUARD analyses the body scanner X-ray images and highlights suspected objects in the central area which is mostly commonly used to conceal drugs by a trafficker or “drug mule”. This enhances the detection capability for the operator and increases the throughput of the screening process. Currently deployed at airports and border crossings, it has already proven to be a valuable tool to assist customs and law enforcement personnel in drug interdiction efforts.

FEATURES:

- Effective detection of concealed narcotics
- Reduced image analysis time
- Remote retrofit upgrade
- Storage of all images with highlighted zones
- Low false alarm rate
- Track and boost operator effectiveness

US PATENTS: US 7,397,892 B2
US 9,392,983 B2



DETECTION ABILITIES BY HIGHLIGHTING THREATS WITH COLOUR CODED BOXES

A-EYE®

The unique AI algorithms developed by LINEV Group provide automatic detection and indication of the prohibited items and threats on or inside the human body and enhance the operator’s detection abilities by highlighting threats with colour coded boxes.

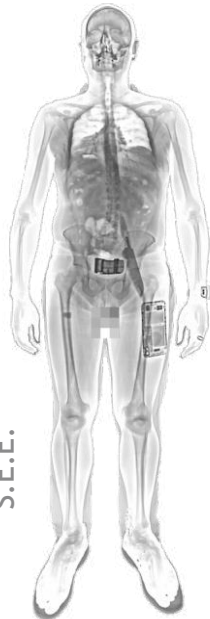


S.E.E.

Standard view

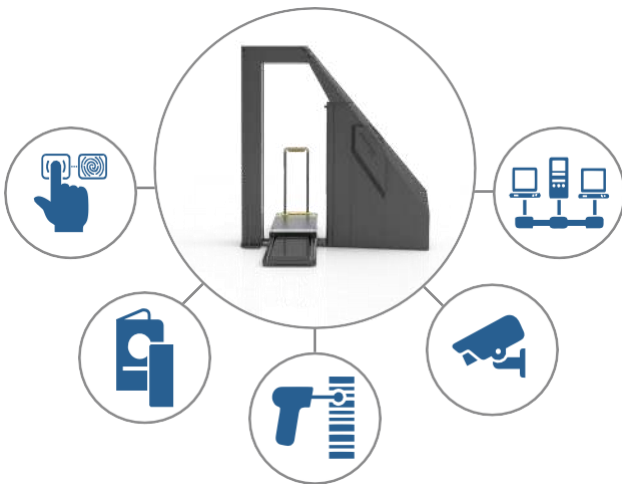


S.E.E.



SUPER EDGE ENHANCEMENT

This cutting-edge image enhancement tool uses sophisticated algorithms to provide optimized clarity and contrast of threats and contraband on or within the human body. S.E.E. processes each image to provide the operator with a highly effective super resolution image which is tailored according to individual scanned.

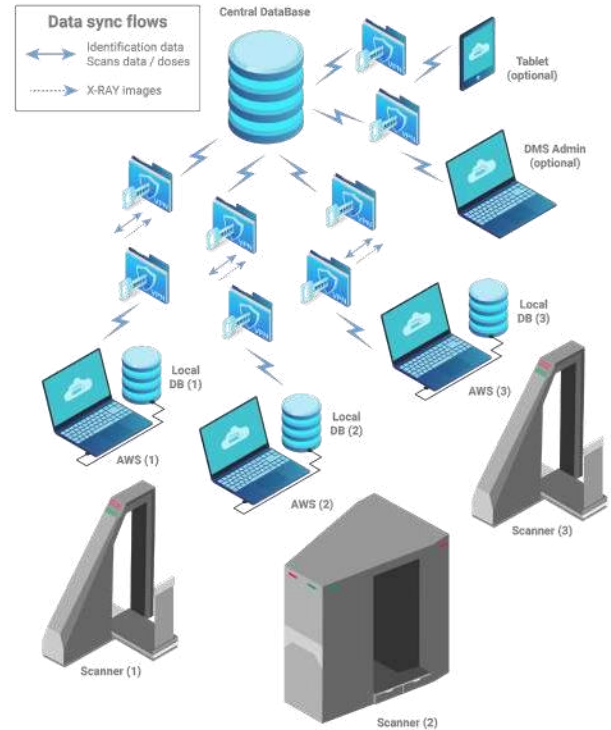


INTEGRATION

Unique software

The software provides full and effective integration of the inspection systems into any security infrastructure with the possibility to connect to any of the common option enhancements including document scanners, CCTV, fingerprint scanners, barcode readers, etc.

DMS



DATA MANAGEMENT SYSTEM

COMPASS DMS is a set of applications used to run X-ray people screening systems. The system allows operators to inspect people and view their accounts, perform data security screening, and view the obtained X-ray images.

REMOTE OPERATION

COMPASS DMS can unite X-ray scanners from separate locations into one network keeping track of the total X-ray exposure dose for each inspected person, even when the person undergoes a security screening process in different locations.

DATA SYNC

COMPASS DMS synchronises the information: inspected people's profiles, scan records, and X-ray images between all connected devices.

SECURITY

COMPASS DMS can be installed on the main server, an automated workstation (AWS) or a mobile device like a tablet.

The DMS manages the data and ensures data safety. All COMPASS data, stored on Operator's AWS, Server or transferred via network is subject to protection.