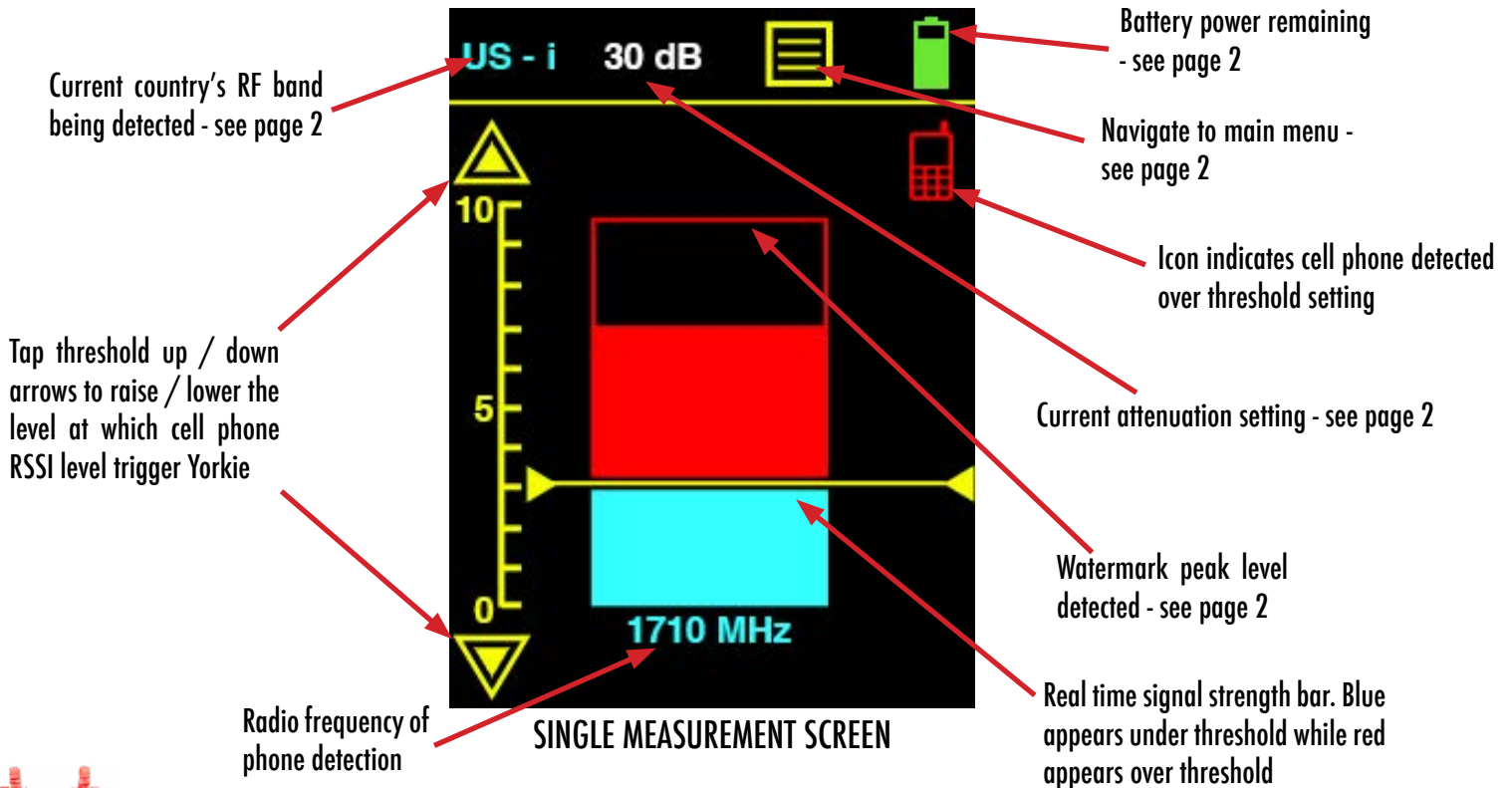


YORKIE QUICK START USER GUIDE

CELL PHONE DETECTOR



UNPACKING

Yorkie ships with a charging dock, AC adapter, omni-directional SMA antenna and the Yorkie receiver all in a hard carrying case.



POWERING UP/DOWN

Yorkie only has one physical button on the front of unit. Press this white button to power up and hold it down for 3 seconds to power down.



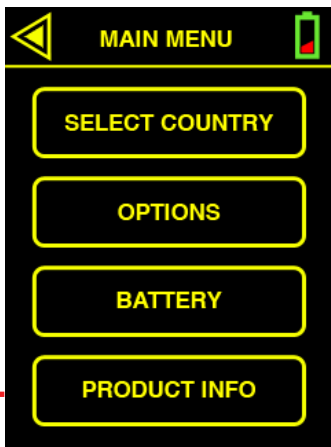
CHARGING

Yorkie ships with an AC powered charging dock. Place unit in charging dock and be sure the red LED on top of unit is ON. If red LED is not ON, Yorkie is not being charged. Try adjusting Yorkie in dock until red LED is ON. Charging takes approximately 4-5 hours. Yorkie runs approximately 4 hours from a full charge. Yorkie may be operated while it is charging but this will heat up the unit and increase charging time substantially so it is not recommended for regular use. If you prefer to operate Yorkie while it is also being charged, be sure to turn on the dual cooling fans using the power switch on the rear of charging dock. Yorkie has smart trickle charging circuitry that is always calibrating the battery but if your battery runtime is noticeably short after a full charge, you may need to manually calibrate the battery. Go to BATTERY under MAIN MENU for more details and consult BVS support.



OPERATION

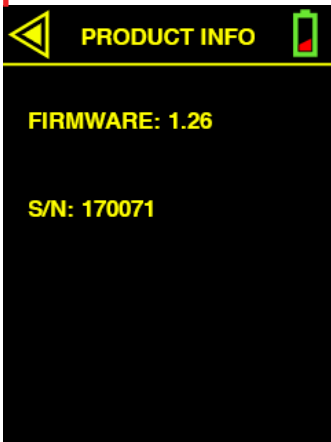
Yorkie chooses the strongest cell phone signal nearby and "locks" onto that phone as it continues to scan the remaining RF bands. As the signal strength increases (or you approach the signal source), Yorkie will vibrate more frequently. If you are using Yorkie in a "noisy" RF environment, try raising the threshold level to decrease the amount of detection triggers and vibrations. If you are not detecting anything, try lowering the ATTENUATION in the OPTIONS menu. You should see a blue bar on the left rise as you lower the attenuation further. Always start measurements with attenuation set at 0 dBm. For more information on typical detection ranges and environments, see included Yorkie data sheet or consult your BVS sales engineer.



MAIN MENU
Choose sub-menus from this screen. The yellow arrow on the top left of every screen will return to the previous screen.



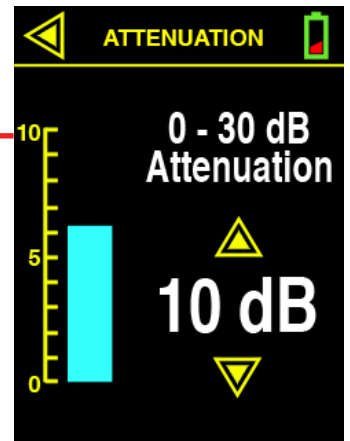
SELECT COUNTRY
Yorkie is factory configured for the country it ships to but users can change that country anytime by choosing the country of origin for devices they are trying to detect. For U.S. customers, Yorkie includes an option to turn off iDEN bands (helps to avoid false triggers from nearby emergency units) or turn on FirstNet bands in addition to standard U.S. bands.



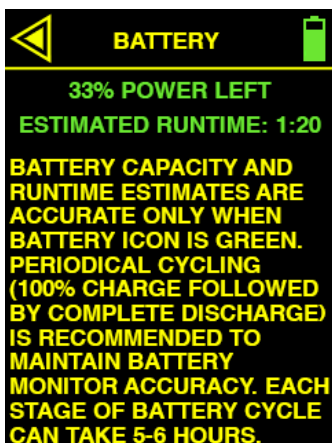
PRODUCT INFO
View firmware version installed and your unit's serial number.



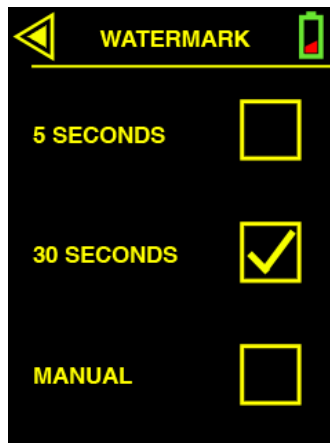
OPTIONS
All measurement options with 'SET' choices will take you to additional screens except for 'VIBRATOR' which is toggled ON by default.



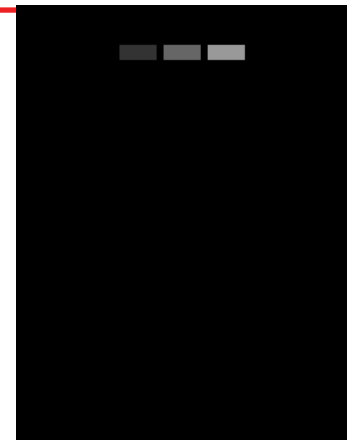
ATTENUATION
Tap up / down on yellow arrow to raise / lower attenuation from 0 to 30 dB. Lower the attenuation (increases sensitivity) to detect faint signals and raise attenuation to lower sensitivity of overly strong RF signals.



BATTERY
View remaining battery power in this screen.



WATERMARK
SET reset time for watermark peak level or 'MANUAL' which resets when users tap on main measurement screen.



STEALTH MODE
This mode keeps the screen minimized and dim for covert operations. Vibration is ON by default. Tap screen anytime to exit mode.