



SCANNA

WITHOUT COMPROMISE

SCANWEDGE ULTRA

ULTRA RUGGED, ULTRA SLIM CCD X-RAY IMAGER

Scanwedge Ultra Lightweight Rugged CCD X-ray System

Scanwedge Ultra is a new lightweight rugged manportable x-ray panel with an 8 x 10" [20 x 25 cm] imaging area. Unlike other CCD x-ray imagers, Scanwedge Ultra can easily slide behind objects close to a wall and into narrow gaps less than 1" thick.

Scanwedge Imaging Panels are extremely robust with no moving parts and no fragile glass components. The x-ray detector panel operates via cable or Wi-Fi connection and without the separate bulky control box that many flat panel x-ray systems require. The new high sensitivity camera provides higher resolution images resulting in improved detection of threats

The complete Scanwedge Ultra x-ray system is perfect rapid deployment x-ray tool for any defence and security search professional as it comprises just 3 components [x-ray generator, imaging panel and laptop/tablet] which can be set up in less than 2 minutes. The system is backpackable and performs equally well for suspect package checks in built up urban areas as for C-IED tasks in dangerous conflict zones.

Applications include IED/EOD, search and investigation, unattended baggage checks, and for detecting weapons and hidden contraband material.



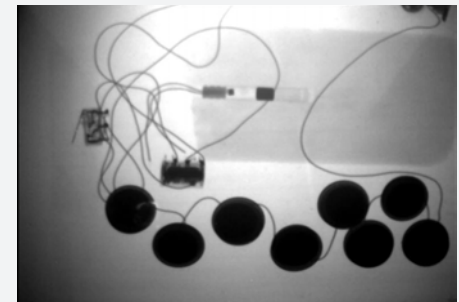
Lightweight, rugged CCD X-ray Imager with no moving or fragile components

Features and Benefits

- ✓ Integrated X-ray Control and Fire via companion laptop or tablet for fast 'Place and Fire' Deployment. X-ray Generator connects both wired or wirelessly.
- ✓ Ultra fast X-ray Image Data Transmission back to laptop/tablet. Image data can be transferred by ethernet cable or wirelessly.
- ✓ Lightweight backpackable system - Ideal for field use
- ✓ Near edge imaging lets you capture more of what you need to see
- ✓ Ultra Rugged with no moving and no fragile glass parts - Suitable for operation in challenging and difficult environments or where rough handling is likely.
- ✓ Backpackable for special ops and/or with rugged wheeled case which doubles as a workstation

Technical Features

- ✓ Image Area - 8 x 10" [20 x 25 cm]
- ✓ Image Resolution: 1280 x 1024 pixels
- ✓ Panel Dimensions: 59.3 [h] x 27.5 cm [w]
- ✓ Depth at imaging area: 1.9 cm. Depth at top camera zone : 13cm
- ✓ Imager Weight: 4.85 kgs [10.67 lbs]



Fast, high resolution CCD x-ray Images

Image processing features

ScanView software gives you a range of image manipulation options to get all the detail out of your x-ray image.

- ✓ Black and white image
- ✓ Inverse / negative image
- ✓ Pseudo colour density filters
- ✓ Brightness Contrast Adjustment
- ✓ Gamma Adjustment
- ✓ Histogram Equalisation
- ✓ Select Region of Interest
- ✓ Multiple zoom 800 x
- ✓ Zoom to region of interest
- ✓ Pseudo 3D
- ✓ Find Edges
- ✓ Sharpen Image
- ✓ Soften and Clean Image
- ✓ Image Rotation/Flip/Mirror
- ✓ Measuring
- ✓ Image Stitching

Database features

- ✓ Database software allows you create incidents and store and manage over 32,000 images using searchable fields.
- ✓ Auto-save of images for evidential purposes
- ✓ Store and Retrieve database images
- ✓ Export and Import Images - Supported image
- ✓ export formats: .sca, .jpg, .tiff [16 bit], .bmp
- ✓ Compact and Export Database
- ✓ Database Protection

Annotation Tools

- ✓ Measurements
- ✓ Add text
- ✓ Draw shapes
- ✓ Point to area
- ✓ Add notes

Generator Control

Select and control your generator pulses remotely and safely via companion laptop or tablet. Compatible with Golden XR150/200/XRS-3/XRS-4



Full Integration with RoVs



www.scanna-msc.com

SCANNA MSC Ltd
223 Regent Street, London W1B 2EB
Telephone: +44 207 355 3555
Fax: +44 207 355 3556
Email: info@scanna-msc.com