



BV 6045

OPTIMAL SOLUTION FOR
QUICK AND ACCURATE INSPECTION
OF PARCELS, SMALL AND
MID-SIZE BAGGAGE



KEY FEATURES

Artificial Intelligence software system for automated detection of firearms, knives and ammunition

The automatic identification of suspicious objects (drugs, explosives)

Availability of 7, 3 colour and infinite colour palettes of images

The fault-tolerant configuration of the acquisition/analysis workstation

Quick start-up and shutdown

Real-time self-diagnostics

The BV 6045 is a high-resolution, single view X-ray baggage inspection system with the ability to automatically detect prohibited objects and threats.

The tunnel with a width of 610 mm and a height of 450 mm is optimal for inspection of baggage, bags, hand luggage and parcels. The System may be used at inspection points of critical infrastructure facilities, law enforcement and security agencies, customs, border guards, hotels, event centers, educational institutions, sports arenas, and other places where reliable and uninterrupted operation of inspection systems is required.

The BV 6045 enables the identification of weapons, explosives, drugs and any other dangerous or prohibited items. Unique colour palettes and touch control provide an exceptional level of operator efficiency.

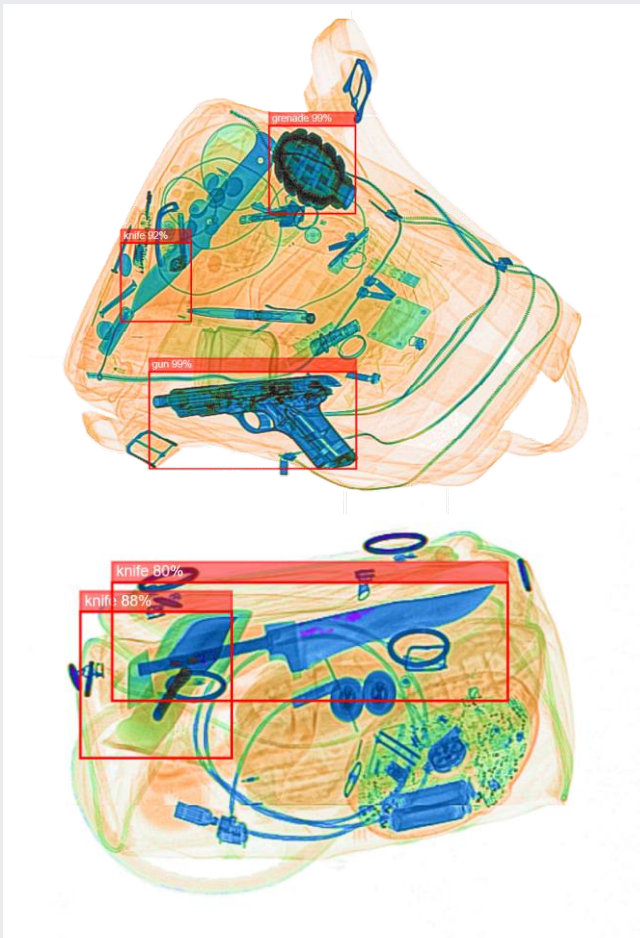
BV 6045

OPTIONS

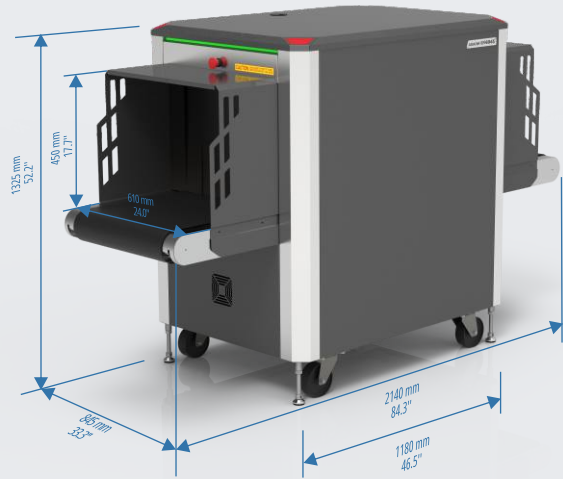
- Artificial Intelligence software system for automated detection of firearms, knives and ammunition
- Additional (2nd) monitor
- Touchscreen operation functionality
- Ability to connect to a local network
- Remote operator position (up to 25 m)
- Monitor top position
- Rigid type packaging

ACCESSORIES

- Roller tables with a length that is multiples of 0.5 m.
- Operator's desk with chair
- Operator's Workstation Stand
- Test objects kit
- Screwed-down feet (4 pcs.)



Examples of Images with Automatic Threat Detection by the AI Software System



GENERAL SPECIFICATIONS

DIMENSIONS

TUNNEL DIMENSIONS	
width	610 mm [24.0 in]
height	450 mm [17.7 in]
OVERALL DIMENSIONS (MAX)	
width	845 mm [33.3 in]
height	1325 mm [52.2 in]
length	2140 mm [84.3 in]
WEIGHT (MAXIMUM)	450 kg [992 lbs]

CONVEYOR BELT

Maximum distributed load on the conveyor belt	180 kg [397 lbs]
Conveyor height	700 mm [27.6 in]
Conveyor speed	0.22±0.03 m/s [43.3 ft/min]

X-RAY SOURCE

Anode voltage	160 kV
Beam direction	Diagonally upward

X-RAY DETECTOR

Detective ability for copper wire	0.08 mm (40 AWG)
Penetration on steel	36 mm guaranteed 37 mm typical
Spatial resolution, line pairs per mm	1.0 in the direction of scanning 1.0 along the detector

POWER SUPPLY

Line voltage	230 VAC ± 10%/120 VAC ± 5%
Line frequency	50/60 Hz
Power consumption	Max 0.9 kVA

ENVIRONMENTAL REQUIREMENTS

Operation:	
- Ambient temperature	0 °C to +40 °C
- Maximum relative humidity	Up to 90%, non-condensing